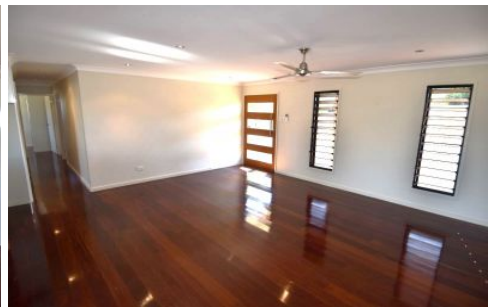




Towers Property & Co  
REAL ESTATE



### 16 Brocklan Close MILLCHESTER QLD

4 2 4

Modern family home offers cool living and room for the entire family.

Open plan living and dining areas feature air-conditioning and polished timber floors.

Stylish and modern kitchen with centre island bench, a combination of white and timber look cabinetry gives a fresh and tidy feel.

Set to one end of the home, a spacious main bedroom includes a walk through his and hers robe space, a modern ensuite with dual vanity and sizeable shower. The further three bedrooms positioned to the opposite end of the home are good-sized and all feature polished timber floors, built-in robes, and split system air-conditioning.

**Land Size** : 7895 sqm  
**View** : <https://www.towerspropertyco.com.au/sale/qld/mount-isa-north-west/millchester/residential/house/7603162>



**Julia Fraser**  
0744262856