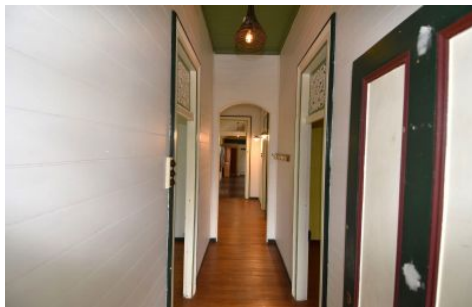




Towers Property & Co
REAL ESTATE



32 Rutherford Street CHARTERS TOWERS CITY QLD

3 1 2

ALL APPLICATIONS ARE NOW CLOSED

An expansive front verandah greets you on entry to this delightful Queenslander.

Open air-conditioned lounge and dining, featuring polished timber floor, tongue and groove walls, high ceilings and fretwork.

Practical kitchen and second dining area.

Three bedrooms, with two rooms featuring a small room perfect for walk-in storage.

A functional yet fitting bathroom with charming claw foot bath to add to the traditional features and separate shower.

Land Size : 1012 sqm

View : <https://www.towerspropertyco.com.au/lease/qld/mount-isa-north-west/charters-towers-city/residential/house/7729904>

<https://www.towerspropertyco.com.au>
Let us help you on your real estate journey

63 Gill Street Charters Towers qLd
07 47 4426 2856